

# trendsetters

Emerging Artists



## Kay Stratman

"I love the feeling of a wet brush on a smooth surface when the brush is transforming the surface into a rugged landscape," says Kay Stratman. "My challenge is to master two opposites—control and spontaneity—and blend them successfully in one painting.

"My goal," Stratman continues, "is that no matter how obvious a painting may appear at first glance, the viewer will find something new

each time they look at it. It could be the smooth texture of the paper, a gracefully thin bend in a river, a gently shaded sky or darkly contrasting mountain. Individual brushstrokes are there to be studied, savored and enjoyed," she explains.

Stratman practices *sumi-e*, the ancient art of Asian brush painting—literally *sumi* means ink and *e* means picture. Pronounced *soo mee aye*, *sumi-e* uses traditional subjects, specific techniques, special equipment and papers—stick ink (*sumi*), grinding stone, rice paper and silk, and bamboo handled brushes. Brush loading (several colors or values on the brush at the same time) and specific brush strokes combined with the unusual absorption properties of the papers create the unique visual quality of *sumi-e*. These paintings are simple in composition and full of harmony, overall balance and peace.

Stratman combines carefully placed softly diffused colors, contrasted with graceful yet bold brush strokes—a unique blend of the essence of the subject and the spirit of the artist. She respects *sumi-e* traditions, and strives to maintain them in her work, yet enjoys taking the art form in new directions. Her *Ikebana Vase* series is a result of this—traditional watercolor florals contrast with the silk-screened patterned bowls and vases, creating a new and intriguing look to this ancient Asian art. Though Asian in technique, her landscapes are often inspired by the

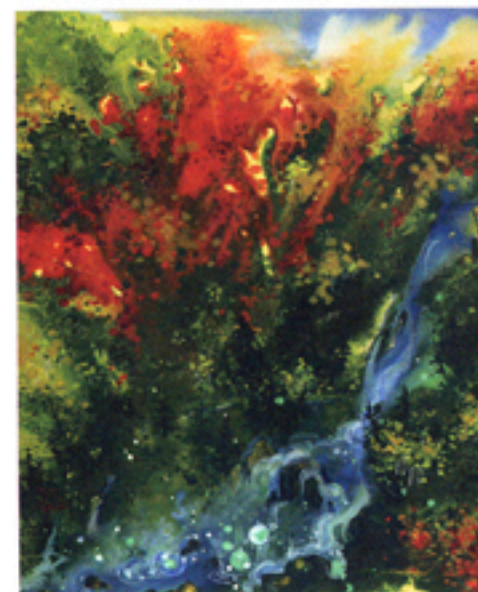
American West and sometimes nontraditional, often painted on location.

A winner of many art awards, Stratman received her B.A. in Art at Minnesota State University-Moorhead in 1978, and worked as a graphic designer in Minneapolis for 14 years. She studied under several Chinese brush painting masters and since 1987 has been a professional fine artist, specializing in Chinese Brush Painting. She lives near Washington, DC, in Maryland, and exhibits her paintings and wearable art in galleries and shows nationwide. "Tie Tracks Hand Painted Neckwear" is a combination of Kay's graphic and fabric art skills in which she can share her interest in the outdoors and the environment with the greater public.

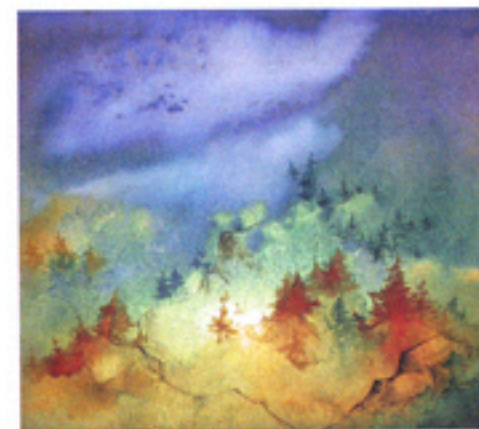


▲ "High Mountain Lake"

For more information, call 301-916-7865; e-mail [kay.stratman@tietracks.com](mailto:kay.stratman@tietracks.com); [www.tietracks.com/singingbird](http://www.tietracks.com/singingbird). **ABN**



▲ "Falls Afire"



▲ "Montana Firestorm"